

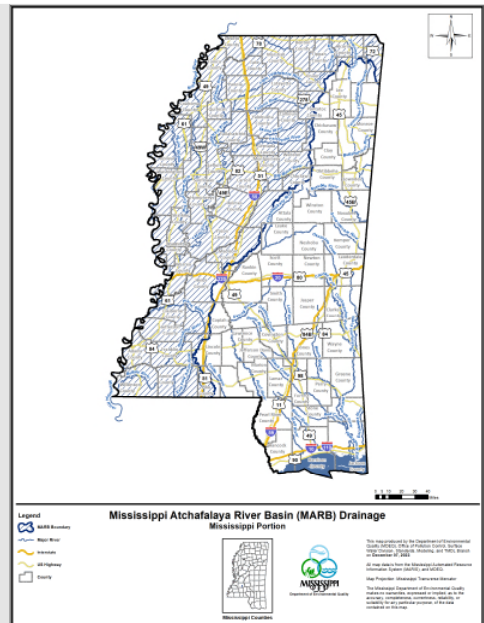
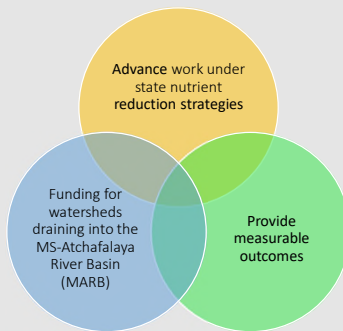
Hypoxia Task Force Mississippi's Plan: GHP Funding December 14, 2022

Natalie Segrest
Chief, Basin Management and NPS Branch
Mississippi Department of Environmental Quality

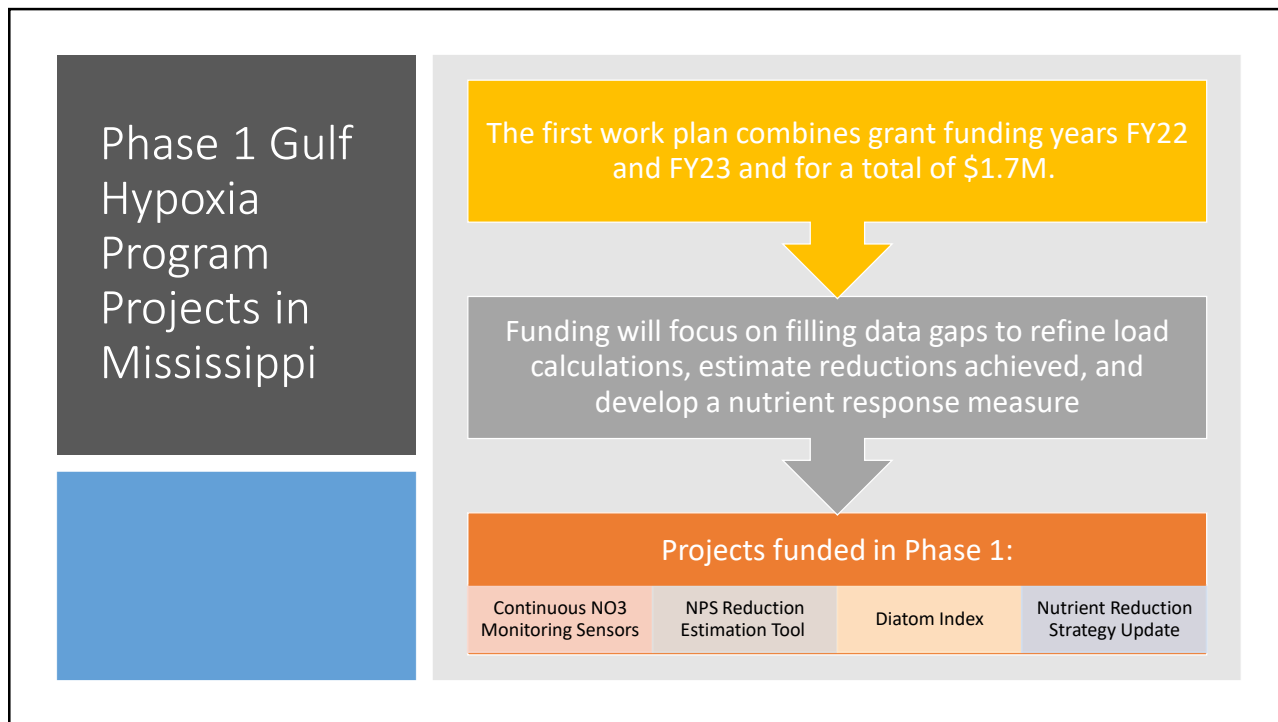
1

Gulf Hypoxia Program Grant (GHP): Requirements

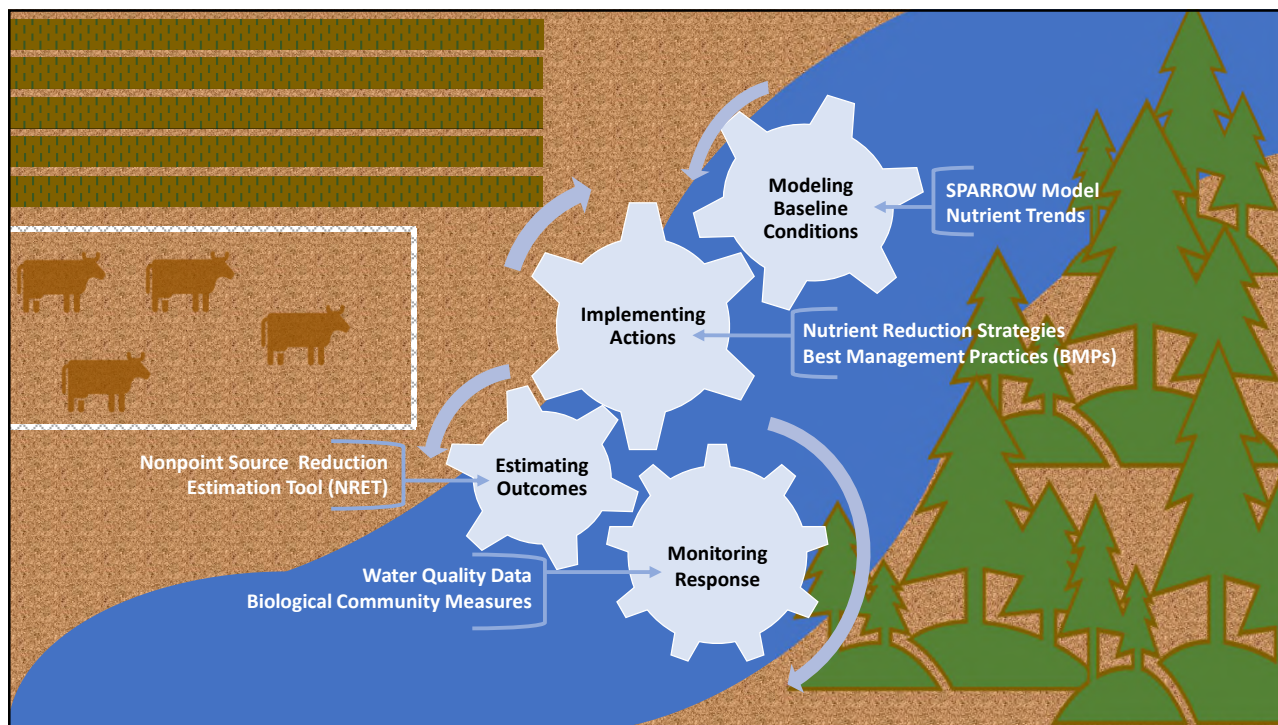
- MS-Atchafalaya River Basin
- Yazoo R., Tennessee R., North Independent, Big Black, and South Independent Streams Basins



2



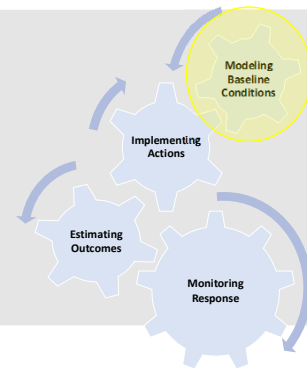
3



4

Continuous Nitrate Monitoring

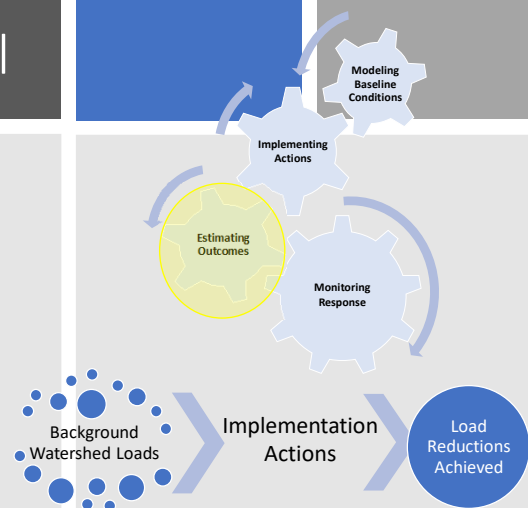
- Continuous Nitrate sensors on major tributaries to the MS River (6 sites)
- Refine load estimates from state waters into the MS River
- Track changes in conditions over time



5

Nonpoint Source (NPS) Reduction Estimation Tool

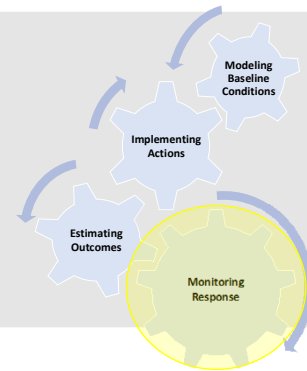
- Establish background loads
- Model best management practices (BMPs) to estimate load reductions achieved.
- Reductions reported at multiple scales: sub-watersheds, watersheds, HUC 8s, basins and regions
- Results used to track progress and report outcomes.



6

Response Measure: Diatom Index

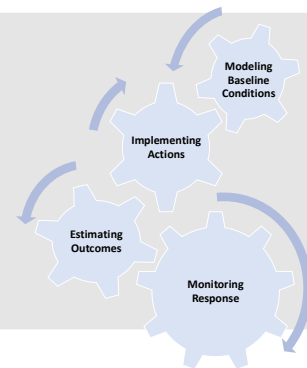
- Biological community measure
- Sensitive to nutrient loading in water
- Augment traditional water quality monitoring
- Measure response from nutrient reduction activities in watersheds



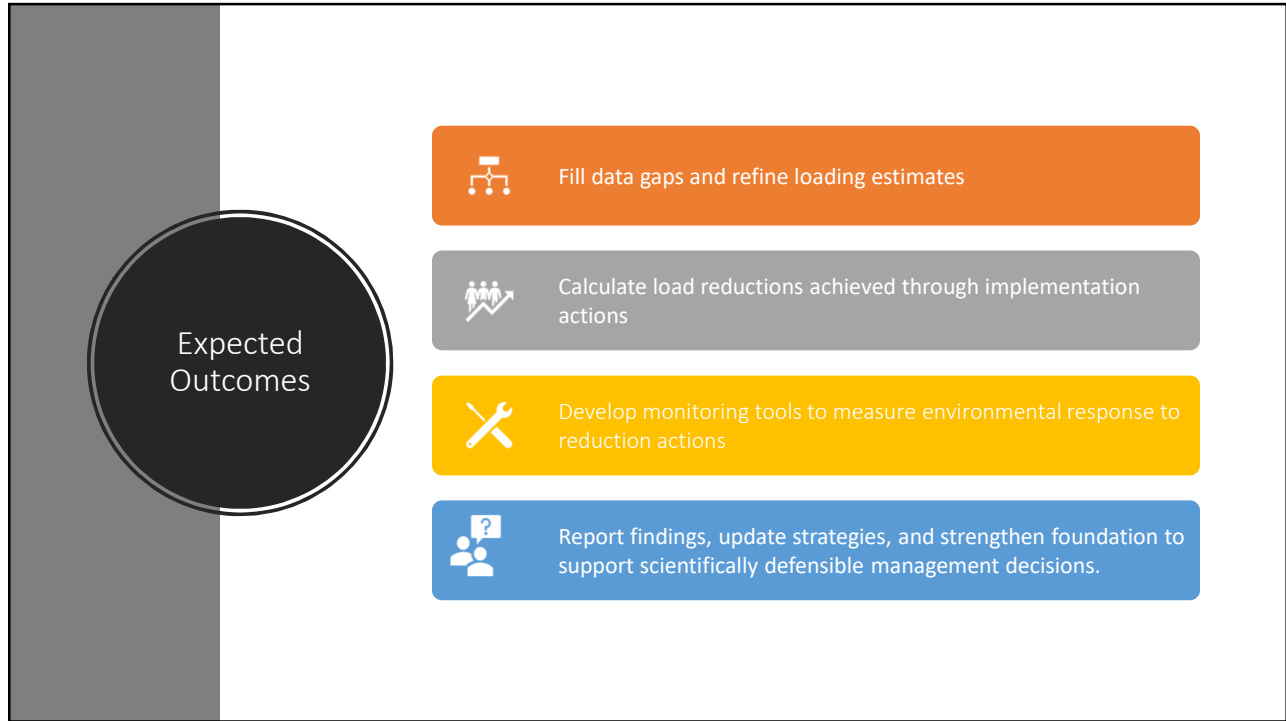
7

Nutrient Reduction Strategy Update

- Mississippi's Nutrient Reduction Strategies were developed 2008-2012.
- Re-engage stakeholders and provide updates on lessons learned, findings, and new approaches.
- Highlight project outcomes since 2008
- Opportunity to discuss and report on MS progress



8



9

Contact Information

For more information on Mississippi's nutrient reduction efforts contact:

Natalie Segrest
nsegrest@mdeq.ms.gov

Christy Prouty
cprouty@mdeq.ms.gov

10